

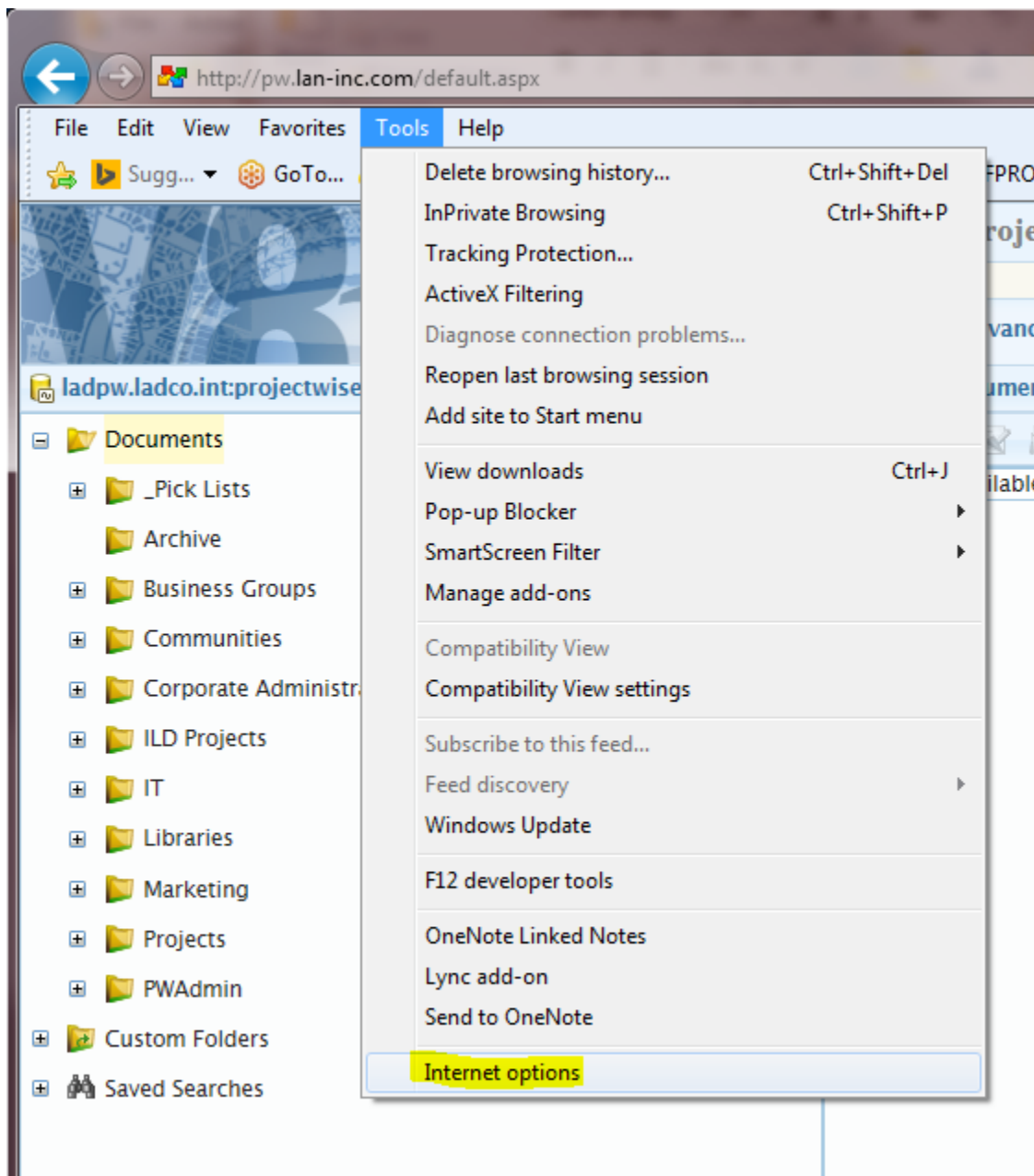
Projectwise Web Client

Configuration Guide

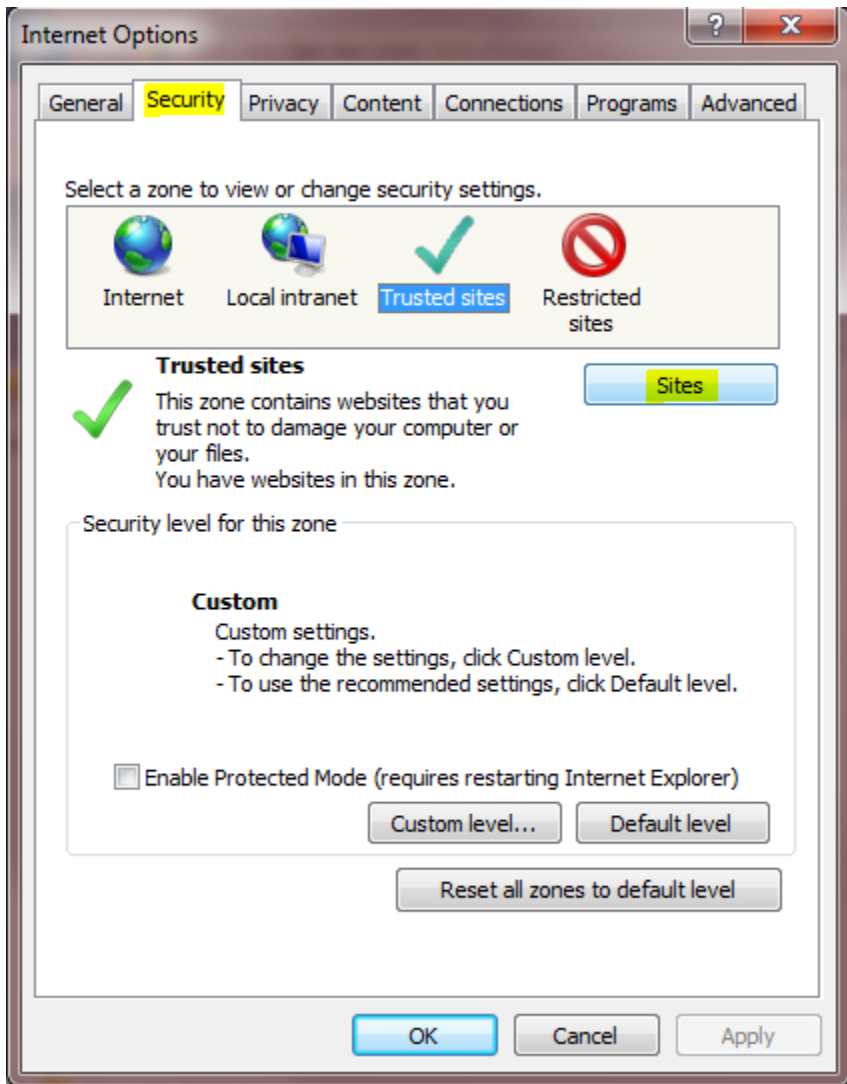
NOTE: these steps may require administrator privileges, please contact your computer support team.

Prerequisite - Trusted Site Settings

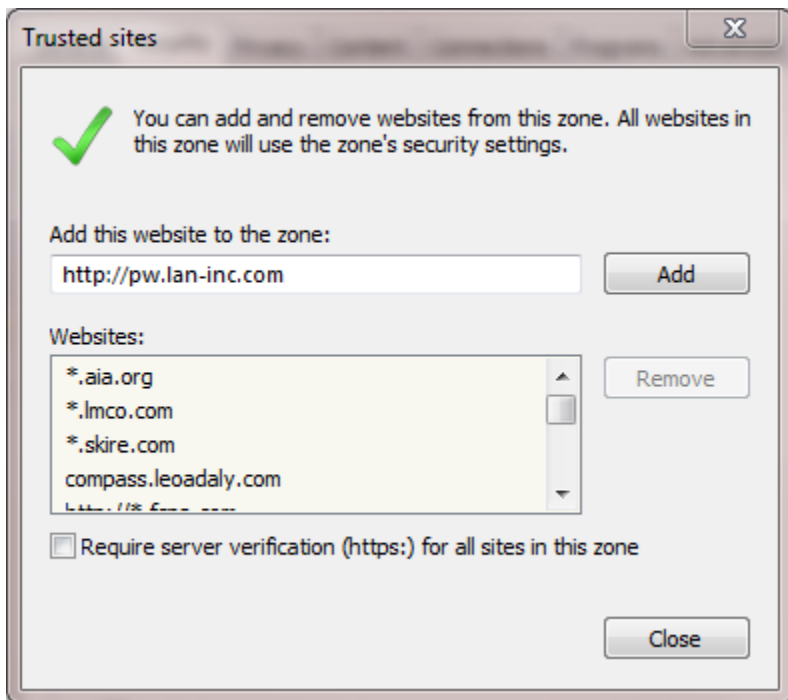
Add LAN Projectwise Web site to your internet browser's trusted sites, in Internet Explorer go to Tools, and select Internet options.



Click Security Tab and select Trusted Sites in the zone selection, click Sites



In the “add this website to the zone” field enter <https://pw.lan-inc.com> and click add



Click the close button and click ok on the Internet options button.

Projectwise Web Server Client Components

Projectwise Web Server Client Components is a required active X control to allow additional functionality to the Projectwise web client. This control is optional and installed when the Internet installation fails or is blocked by company security settings, install it from the link provided in “Software Downloads” on <https://pw.lan-inc.com>